

# Technical Data Sheet for L-Glutathione Reduced

Version: RDL\_V2.0

## Product identification

**Product name:** L-Glutathione Reduced

**Purity(HPLC):**  $\geq 98.0\%$

**Assay:** 98.0-101.0%

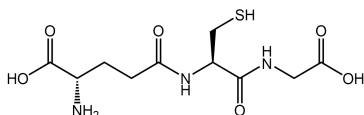
**CAS:** 70-18-8

**Molecular formula:** C<sub>10</sub>H<sub>17</sub>N<sub>3</sub>O<sub>6</sub>S

**Molecular weight:** 307.3

**EINECS:** 200-725-4

**Molecular structure:**



## Physical and chemical properties

**Appearance:** White to off-white crystalline powder

**Solubility:** Soluble in water (20 °C), hardly soluble in ethanol and methanol

**Clarity:** Clear,colorless(0.1 g/ml aqueous solution)

**Optical rotation:** -15.5~-17.5°(40 mg/ml aqueous solution)

**Melting point:** 192~195 °C

**Relative density(count water as 1):** 1.441 (4 °C)

## Inorganic analysis

**Iron:**  $\leq 10$  ppm

**Chloride:**  $\leq 200$  ppm

**Sulfate:**  $\leq 300$  ppm

**Ammonium:**  $\leq 200$  ppm

**Heavy metals:**  $\leq 10$  ppm

---

**Arsenic:**  $\leq 1$  ppm

**Cadmium:**  $\leq 1$  ppm

**Lead:**  $\leq 1$  ppm

**Mercury:**  $\leq 0.3$  ppm

### Microbiological analysis

**TAMC:**  $\leq 100$  CFU/g

**Mold & yeast:**  $\leq 50$  CFU/g

**Coliform:**  $\leq 0.43$  MPN/g

**Thermotolerant coliform:** N.D

**Pseudomonas aeruginosa:** N.D

**Staphylococcus aureus:** N.D

**Salmonella:** N.D

### Production technology

**Production method:** Enzymic method

**Brief description of process:** Raw materials— reaction — purification — portioning — drying

**Impurities requirements:** Total impurities  $\leq 2.0\%$ 、single impurity  $\leq 1.5\%$

**Loss on drying:**  $\leq 0.5\%$ (150 °C, 3 h)

**Residue on ignition:**  $\leq 0.1\%$

### Application area

**Main application:** Dietary supplements, pet nutrition, and feed additives

**Active for application:**

Dietary supplements: Capsules(500 mg/capsule)

Pet nutrition: Capsules/tablets(20 mg/capsule)

Feed additives: 100~500 mg/kg

**Incompatibility:** Strong oxidizing agents, complexing agents

---

---

## Packaging and storage

**Packaging:** 1 kg/bag, 25 kg/bucket

**Storage:**

Store in an airtight container in a clean, light-proof and cool place

Long-term storage at 4 °C

Shelf life:24 months

---

Add.: Floor 3, Building 2, Shenzhen Biology Incubator, No.10, Gaoxin C.1st Ave., Nanshan District, Shenzhen, Guangdong, China

地址：中国广东省深圳市南山区高新中一道 10 号深圳生物孵化基地 2 号楼 3 层

Tel: (+86)755-2665 9310

Web: [www.szreadline.com](http://www.szreadline.com)

